



**RECORD OF TITLE**  
**UNDER LAND TRANSFER ACT 2017**  
**FREEHOLD**  
**Search Copy**



R.W. Muir  
Registrar-General  
of Land

**Identifier** **174218**  
**Land Registration District** **South Auckland**  
**Date Issued** 07 December 2004

**Prior References**  
132798

**HOMESELL / HOMESELL PRO DISCLAIMER**

This document has been obtained on behalf of the client and is made available to customers for general information purposes only. Neither HomeSell / HomeSell Pro nor their client warrant the accuracy, completeness or currency of the document nor do they accept liability for any errors or omission in this document. All customers should obtain and rely on their own documents and legal advice.

---

**Estate** Fee Simple  
**Area** 889 square metres more or less  
**Legal Description** Lot 26 Deposited Plan 342404

**Registered Owners**

Peter Michael Walmsley as to a 1/2 share  
Suzanne Elizabeth Walmsley as to a 1/2 share

---

**Interests**

Subject to Part IV A Conservation Act 1987

Subject to Section 11 Crown Minerals Act 1991

6243386.5 Consent Notice pursuant to Section 221 Resource Management Act 1991 - 7.12.2004 at 12:14 pm

Subject to a right (in gross) to drain sewage over parts marked C and G1 and water over part marked C on DP 342404 in favour of the Rotorua District Council created by Easement Instrument 6243386.10 - 7.12.2004 at 12:14 pm

Subject to a right (in gross) to convey water over part marked C on DP 342404 in favour of the Rotorua District Council created by Easement Instrument 6243386.10 - 7.12.2004 at 12:14 pm

The easements created by Easement Instrument 6243386.10 are subject to Section 243(a) Resource Management Act 1991

Subject to a right (in gross) to convey gas over part marked C on DP 342404 in favour of NGC New Zealand Limited created by Easement Instrument 6243386.11 - 7.12.2004 at 12:14 pm

The easement created by Easement Instrument 6243386.11 is subject to Section 243(a) Resource Management Act 1991

Subject to a right (in gross) to convey electricity, telecommunications and electronic data over part marked C on DP 342404 in favour of Unison Networks Limited created by Easement Instrument 6243386.12 - 7.12.2004 at 12:14 pm

Some of the easements created by Easement Instrument 6243386.12 are subject to Section 243(a) Resource Management Act 1991

Subject to a right of way and a right to convey water, gas, electricity, telecommunications and computer media over part marked C on DP 342404 created by Easement Instrument 6243386.13 - 7.12.2004 at 12:14 pm

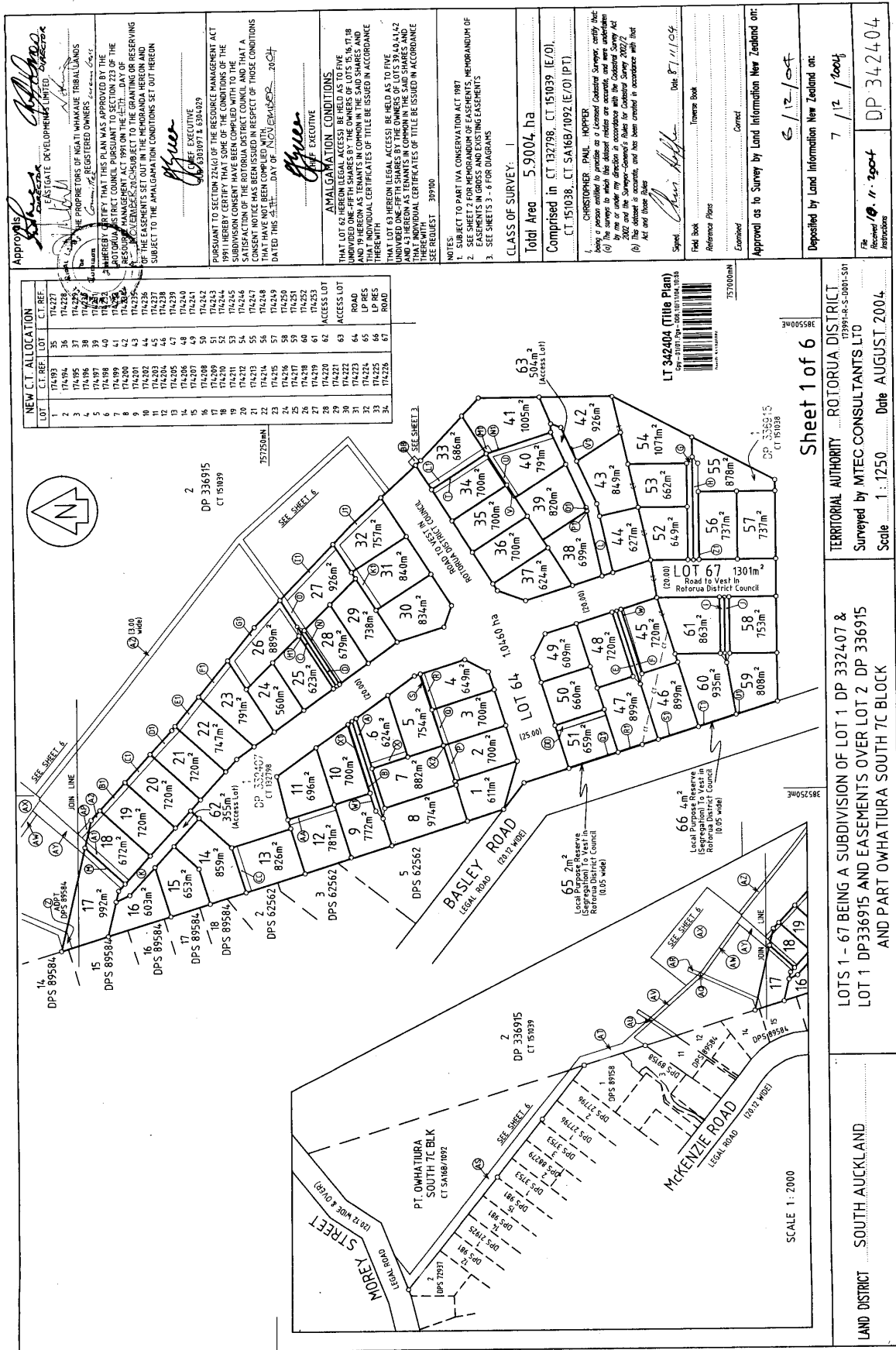
Appurtenant hereto is a right of way and a right to convey water, gas, electricity, telecommunications and computer media created by Easement Instrument 6243386.13 - 7.12.2004 at 12:14 pm

The easements created by Easement Instrument 6243386.13 are subject to Section 243(a) Resource Management Act 1991  
Land Covenant in Easement Instrument 6243386.14 - 7.12.2004 at 12:14 pm

Subject to a right (in gross) to convey telecommunications and computer media over part marked C on DP 342404 in favour of Telecom New Zealand Limited created by Easement Instrument 6253240.1 - 15.12.2004 at 9:00 am

The easements created by Easement Instrument 6253240.1 are subject to Section 243(a) Resource Management Act 1991

6283523.2 Mortgage to Bank of New Zealand - 20.1.2005 at 9:00 am



Approvals

MEMORANDUM OF EASEMENTS IN GROSS

PURPOSE	SHOWN	SERV. TEN.	GRANTEE
RIGHT OF WAY	(A)	LOT 8 HEREON	ROTORUA DISTRICT COUNCIL
WATER, GAS, ELECTRICITY, TELECOMMUNICATIONS & COMPUTER MEDIA	(B)	LOT 9 HEREON	
	(C)	LOT 10 HEREON	
	(D)	LOT 11 HEREON	
	(E)	LOT 12 HEREON	
	(F)	LOT 13 HEREON	
	(G)	LOT 14 HEREON	
	(H)	LOT 15 HEREON	
	(I)	LOT 16 HEREON	
	(J)	LOT 17 HEREON	
	(K)	LOT 18 HEREON	
	(L)	LOT 19 HEREON	
	(M)	LOT 20 HEREON	
	(N)	LOT 21 HEREON	
	(O)	LOT 22 HEREON	
	(P)	LOT 23 HEREON	
	(Q)	LOT 24 HEREON	
	(R)	LOT 25 HEREON	
	(S)	LOT 26 HEREON	
	(T)	LOT 27 HEREON	
	(U)	LOT 28 HEREON	
	(V)	LOT 29 HEREON	
	(W)	LOT 30 HEREON	
	(X)	LOT 31 HEREON	
	(Y)	LOT 32 HEREON	
	(Z)	LOT 33 HEREON	
	(AA)	LOT 34 HEREON	
	(AB)	LOT 35 HEREON	
	(AC)	LOT 36 HEREON	
	(AD)	LOT 37 HEREON	
	(AE)	LOT 38 HEREON	
	(AF)	LOT 39 HEREON	
	(AG)	LOT 40 HEREON	
	(AH)	LOT 41 HEREON	
	(AI)	LOT 42 HEREON	
	(AJ)	LOT 43 HEREON	
	(AK)	LOT 44 HEREON	
	(AL)	LOT 45 HEREON	
	(AM)	LOT 46 HEREON	
	(AN)	LOT 47 HEREON	
	(AO)	LOT 48 HEREON	
	(AP)	LOT 49 HEREON	
	(AQ)	LOT 50 HEREON	
	(AR)	LOT 51 HEREON	
	(AS)	LOT 52 HEREON	
	(AT)	LOT 53 HEREON	
	(AU)	LOT 54 HEREON	
	(AV)	LOT 55 HEREON	
	(AW)	LOT 56 HEREON	
	(AX)	LOT 57 HEREON	
	(AY)	LOT 58 HEREON	
	(AZ)	LOT 59 HEREON	
	(BA)	LOT 60 HEREON	
	(BB)	LOT 61 HEREON	
	(BC)	LOT 62 HEREON	
	(BD)	LOT 63 HEREON	
	(BE)	LOT 64 HEREON	
	(BF)	LOT 65 HEREON	
	(BG)	LOT 66 HEREON	
	(BH)	LOT 67 HEREON	
	(BI)	LOT 68 HEREON	
	(BJ)	LOT 69 HEREON	
	(BK)	LOT 70 HEREON	
	(BL)	LOT 71 HEREON	
	(BM)	LOT 72 HEREON	
	(BN)	LOT 73 HEREON	
	(BO)	LOT 74 HEREON	
	(BP)	LOT 75 HEREON	
	(BQ)	LOT 76 HEREON	
	(BR)	LOT 77 HEREON	
	(BS)	LOT 78 HEREON	
	(BT)	LOT 79 HEREON	
	(BU)	LOT 80 HEREON	
	(BV)	LOT 81 HEREON	
	(BW)	LOT 82 HEREON	
	(BX)	LOT 83 HEREON	
	(BY)	LOT 84 HEREON	
	(BZ)	LOT 85 HEREON	
	(CA)	LOT 86 HEREON	
	(CB)	LOT 87 HEREON	
	(CC)	LOT 88 HEREON	
	(CD)	LOT 89 HEREON	
	(CE)	LOT 90 HEREON	
	(CF)	LOT 91 HEREON	
	(CG)	LOT 92 HEREON	
	(CH)	LOT 93 HEREON	
	(CI)	LOT 94 HEREON	
	(CJ)	LOT 95 HEREON	
	(CK)	LOT 96 HEREON	
	(CL)	LOT 97 HEREON	
	(CM)	LOT 98 HEREON	
	(CN)	LOT 99 HEREON	
	(CO)	LOT 100 HEREON	

EXISTING EASEMENTS IN GROSS

PURPOSE	SHOWN	SERV. TEN.	DOCUMENT
RIGHT OF WAY	(A)	LOT 8 HEREON	B64/154-6
WATER, GAS, ELECTRICITY, TELECOMMUNICATIONS & COMPUTER MEDIA	(B)	LOT 9 HEREON	
	(C)	LOT 10 HEREON	
	(D)	LOT 11 HEREON	
	(E)	LOT 12 HEREON	
	(F)	LOT 13 HEREON	
	(G)	LOT 14 HEREON	
	(H)	LOT 15 HEREON	
	(I)	LOT 16 HEREON	
	(J)	LOT 17 HEREON	
	(K)	LOT 18 HEREON	
	(L)	LOT 19 HEREON	
	(M)	LOT 20 HEREON	
	(N)	LOT 21 HEREON	
	(O)	LOT 22 HEREON	
	(P)	LOT 23 HEREON	
	(Q)	LOT 24 HEREON	
	(R)	LOT 25 HEREON	
	(S)	LOT 26 HEREON	
	(T)	LOT 27 HEREON	
	(U)	LOT 28 HEREON	
	(V)	LOT 29 HEREON	
	(W)	LOT 30 HEREON	
	(X)	LOT 31 HEREON	
	(Y)	LOT 32 HEREON	
	(Z)	LOT 33 HEREON	
	(AA)	LOT 34 HEREON	
	(AB)	LOT 35 HEREON	
	(AC)	LOT 36 HEREON	
	(AD)	LOT 37 HEREON	
	(AE)	LOT 38 HEREON	
	(AF)	LOT 39 HEREON	
	(AG)	LOT 40 HEREON	
	(AH)	LOT 41 HEREON	
	(AI)	LOT 42 HEREON	
	(AJ)	LOT 43 HEREON	
	(AK)	LOT 44 HEREON	
	(AL)	LOT 45 HEREON	
	(AM)	LOT 46 HEREON	
	(AN)	LOT 47 HEREON	
	(AO)	LOT 48 HEREON	
	(AP)	LOT 49 HEREON	
	(AQ)	LOT 50 HEREON	
	(AR)	LOT 51 HEREON	
	(AS)	LOT 52 HEREON	
	(AT)	LOT 53 HEREON	
	(AU)	LOT 54 HEREON	
	(AV)	LOT 55 HEREON	
	(AW)	LOT 56 HEREON	
	(AX)	LOT 57 HEREON	
	(AY)	LOT 58 HEREON	
	(AZ)	LOT 59 HEREON	
	(BA)	LOT 60 HEREON	
	(BB)	LOT 61 HEREON	
	(BC)	LOT 62 HEREON	
	(BD)	LOT 63 HEREON	
	(BE)	LOT 64 HEREON	
	(BF)	LOT 65 HEREON	
	(BG)	LOT 66 HEREON	
	(BH)	LOT 67 HEREON	
	(BI)	LOT 68 HEREON	
	(BJ)	LOT 69 HEREON	
	(BK)	LOT 70 HEREON	
	(BL)	LOT 71 HEREON	
	(BM)	LOT 72 HEREON	
	(BN)	LOT 73 HEREON	
	(BO)	LOT 74 HEREON	
	(BP)	LOT 75 HEREON	
	(BQ)	LOT 76 HEREON	
	(BR)	LOT 77 HEREON	
	(BS)	LOT 78 HEREON	
	(BT)	LOT 79 HEREON	
	(BU)	LOT 80 HEREON	
	(BV)	LOT 81 HEREON	
	(BW)	LOT 82 HEREON	
	(BX)	LOT 83 HEREON	
	(BY)	LOT 84 HEREON	
	(BZ)	LOT 85 HEREON	
	(CA)	LOT 86 HEREON	
	(CB)	LOT 87 HEREON	
	(CC)	LOT 88 HEREON	
	(CD)	LOT 89 HEREON	
	(CE)	LOT 90 HEREON	
	(CF)	LOT 91 HEREON	
	(CG)	LOT 92 HEREON	
	(CH)	LOT 93 HEREON	
	(CI)	LOT 94 HEREON	
	(CJ)	LOT 95 HEREON	
	(CK)	LOT 96 HEREON	
	(CL)	LOT 97 HEREON	
	(CM)	LOT 98 HEREON	
	(CN)	LOT 99 HEREON	
	(CO)	LOT 100 HEREON	

MEMORANDUM OF EASEMENTS IN GROSS

PURPOSE	SHOWN	SERV. TEN.	GRANTEE
RIGHT TO DRAIN WATER	(A)	LOT 8 HEREON	ROTORUA DISTRICT COUNCIL
	(B)	LOT 9 HEREON	
	(C)	LOT 10 HEREON	
	(D)	LOT 11 HEREON	
	(E)	LOT 12 HEREON	
	(F)	LOT 13 HEREON	
	(G)	LOT 14 HEREON	
	(H)	LOT 15 HEREON	
	(I)	LOT 16 HEREON	
	(J)	LOT 17 HEREON	
	(K)	LOT 18 HEREON	
	(L)	LOT 19 HEREON	
	(M)	LOT 20 HEREON	
	(N)	LOT 21 HEREON	
	(O)	LOT 22 HEREON	
	(P)	LOT 23 HEREON	
	(Q)	LOT 24 HEREON	
	(R)	LOT 25 HEREON	
	(S)	LOT 26 HEREON	
	(T)	LOT 27 HEREON	
	(U)	LOT 28 HEREON	
	(V)	LOT 29 HEREON	
	(W)	LOT 30 HEREON	
	(X)	LOT 31 HEREON	
	(Y)	LOT 32 HEREON	
	(Z)	LOT 33 HEREON	
	(AA)	LOT 34 HEREON	
	(AB)	LOT 35 HEREON	
	(AC)	LOT 36 HEREON	
	(AD)	LOT 37 HEREON	
	(AE)	LOT 38 HEREON	
	(AF)	LOT 39 HEREON	
	(AG)	LOT 40 HEREON	
	(AH)	LOT 41 HEREON	
	(AI)	LOT 42 HEREON	
	(AJ)	LOT 43 HEREON	
	(AK)	LOT 44 HEREON	
	(AL)	LOT 45 HEREON	
	(AM)	LOT 46 HEREON	
	(AN)	LOT 47 HEREON	
	(AO)	LOT 48 HEREON	
	(AP)	LOT 49 HEREON	
	(AQ)	LOT 50 HEREON	
	(AR)	LOT 51 HEREON	
	(AS)	LOT 52 HEREON	
	(AT)	LOT 53 HEREON	
	(AU)	LOT 54 HEREON	
	(AV)	LOT 55 HEREON	
	(AW)	LOT 56 HEREON	
	(AX)	LOT 57 HEREON	
	(AY)	LOT 58 HEREON	
	(AZ)	LOT 59 HEREON	
	(BA)	LOT 60 HEREON	
	(BB)	LOT 61 HEREON	
	(BC)	LOT 62 HEREON	
	(BD)	LOT 63 HEREON	
	(BE)	LOT 64 HEREON	
	(BF)	LOT 65 HEREON	
	(BG)	LOT 66 HEREON	
	(BH)	LOT 67 HEREON	
	(BI)	LOT 68 HEREON	
	(BJ)	LOT 69 HEREON	
	(BK)	LOT 70 HEREON	
	(BL)	LOT 71 HEREON	
	(BM)	LOT 72 HEREON	
	(BN)	LOT 73 HEREON	
	(BO)	LOT 74 HEREON	
	(BP)	LOT 75 HEREON	
	(BQ)	LOT 76 HEREON	
	(BR)	LOT 77 HEREON	
	(BS)	LOT 78 HEREON	
	(BT)	LOT 79 HEREON	
	(BU)	LOT 80 HEREON	
	(BV)	LOT 81 HEREON	
	(BW)	LOT 82 HEREON	
	(BX)	LOT 83 HEREON	
	(BY)	LOT 84 HEREON	
	(BZ)	LOT 85 HEREON	
	(CA)	LOT 86 HEREON	
	(CB)	LOT 87 HEREON	
	(CC)	LOT 88 HEREON	
	(CD)	LOT 89 HEREON	
	(CE)	LOT 90 HEREON	
	(CF)	LOT 91 HEREON	
	(CG)	LOT 92 HEREON	
	(CH)	LOT 93 HEREON	
	(CI)	LOT 94 HEREON	
	(CJ)	LOT 95 HEREON	
	(CK)	LOT 96 HEREON	
	(CL)	LOT 97 HEREON	
	(CM)	LOT 98 HEREON	
	(CN)	LOT 99 HEREON	
	(CO)	LOT 100 HEREON	

CLASS OF SURVEY: 1

Total Area

Comprised in

CHRISTOPHER PAUL HOPPER  
I am a Licensed Cadastral Surveyor, certify that the survey was conducted in accordance with the Land Information Act 2002 and the Survey Regulations 2002/2003, and has been created in accordance with the Act and these Rules.

Signed: *Christopher Paul Hopper* Date: 01/11/2004

Field Book: *Transverse Book*

Reference Photo: *Correct*

Examined: *Correct*

Approved as to Survey by Land Information New Zealand on: *6/12/04*

Deposited by Land Information New Zealand on: *7/12/2004*

File Received: *10/11/2004* DP 342404

Sheet 2 of 6

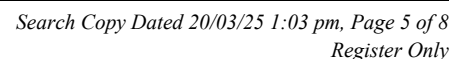
TERRITORIAL AUTHORITY: ROTORUA DISTRICT COUNCIL

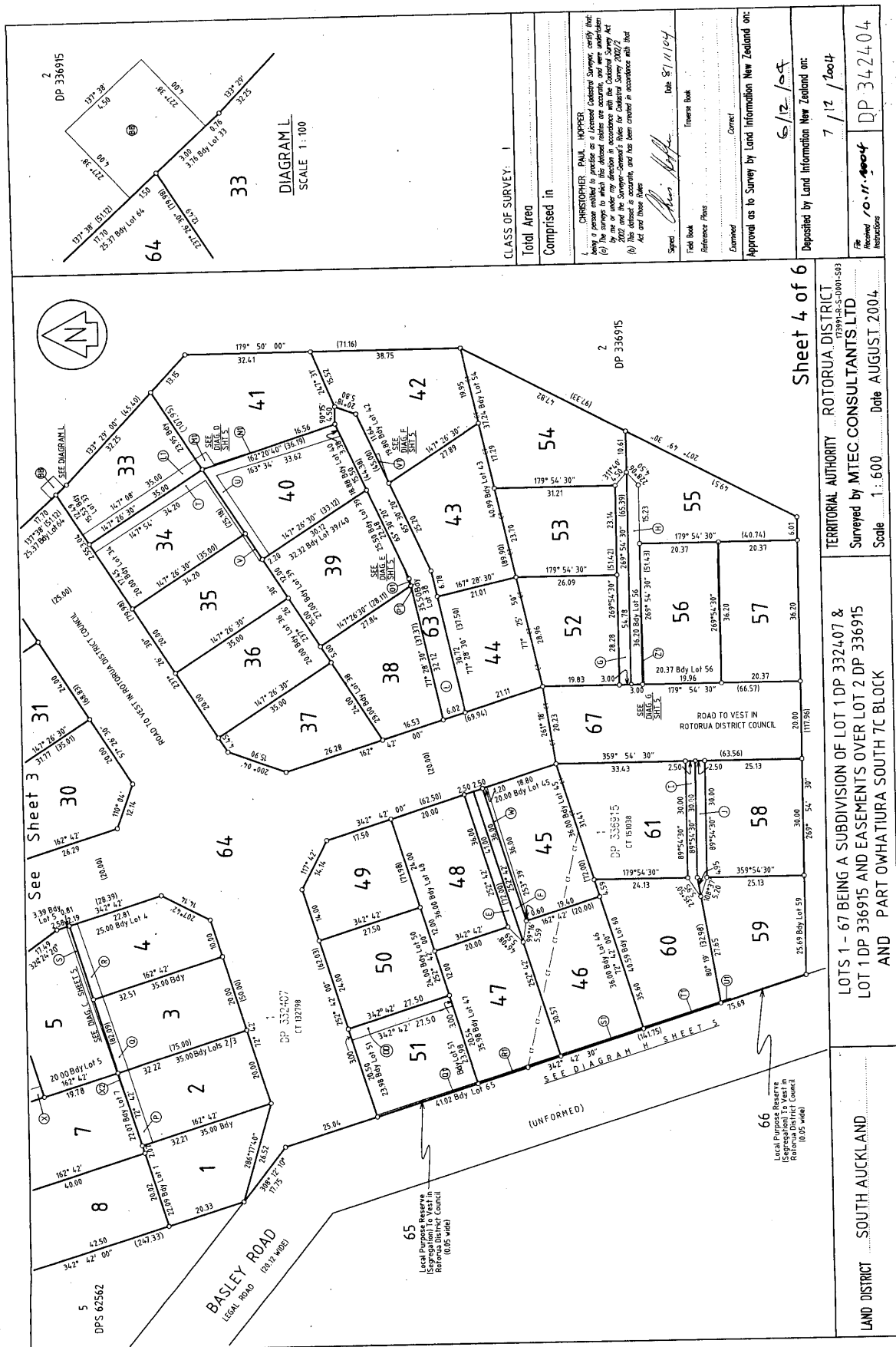
Surveyed by: MTEC CONSULTANTS LTD

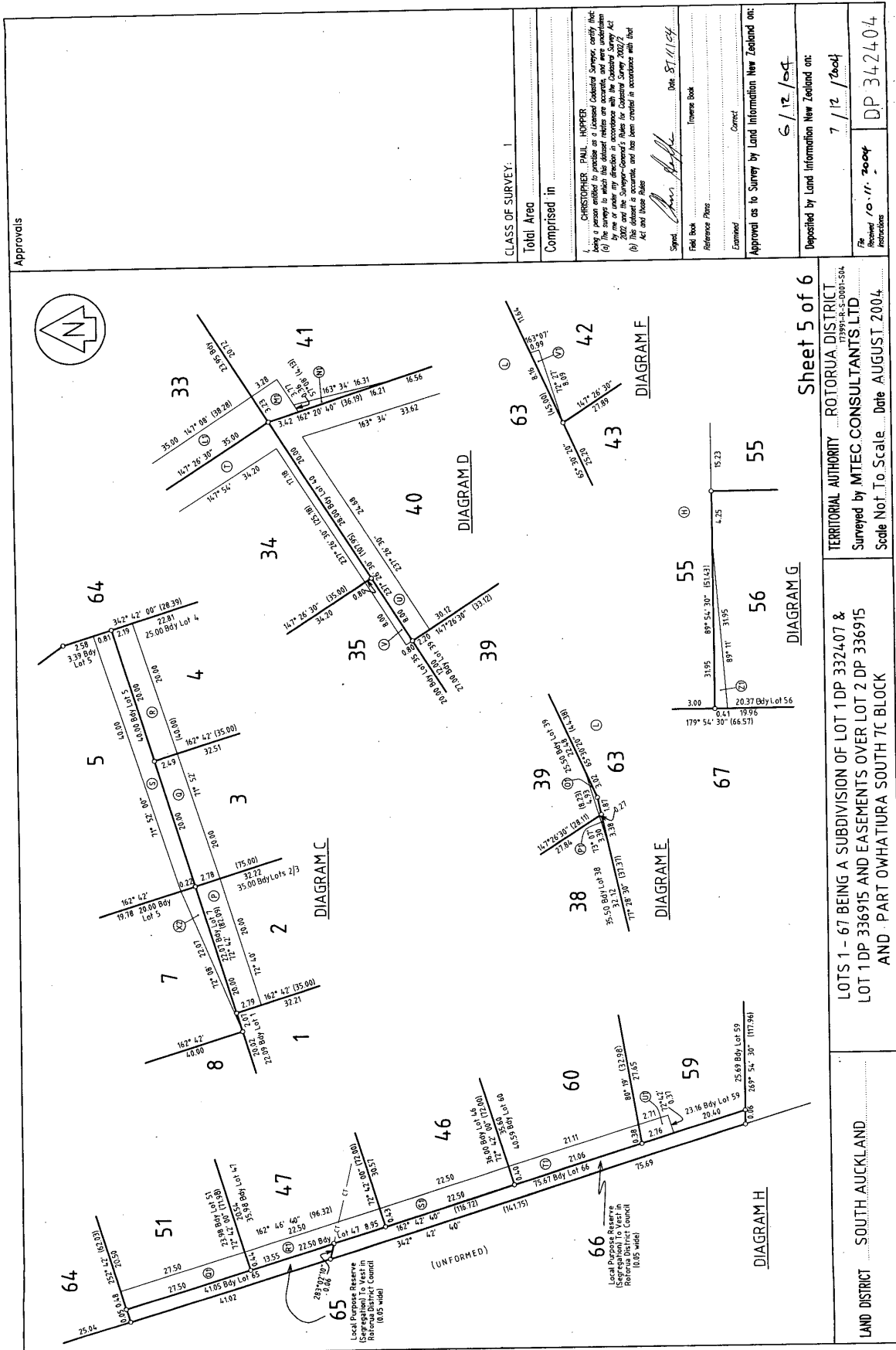
Scale: Date AUGUST 2004

LAND DISTRICT: SOUTH AUCKLAND

LOTS 1 - 67 BEING A SUBDIVISION OF LOT 1 DP 332407 & LOT 1 DP 336915 AND EASEMENTS OVER LOT 2 DP 336915 AND PART OWHATUA SOUTH 7C BLOCK







Approvals

CLASS OF SURVEY: 1

Total Area

Comprised in

CHRISTOPHER PAUL HOPPER  
Being a person entitled to practice as a Licensed Cadastral Surveyor, certify that:  
(a) The survey is a true and correct survey of the land described in the Survey Plan and the Survey-General's Rules for Cadastral Survey 2002/2  
(b) This edition is accurate, and has been created in accordance with that Act and these Rules

Signed: *Chris Hopper* Date: 27/11/04

Field Book

Reference Photo

Examined

Correct

Approval as to Survey by Land Information New Zealand on:

6/12/04

Deposited by Land Information New Zealand on:

7/12/04

DP 342404

Instructions

Sheet 5 of 6

TERRITORIAL AUTHORITY ROTORUA DISTRICT

Surveyed by MTEC CONSULTANTS LTD

Scale Not To Scale Date AUGUST 2004

LOTS 1 - 67 BEING A SUBDIVISION OF LOT 1 DP 332407 & LOT 1 DP 336915 AND EASEMENTS OVER LOT 2 DP 336915 AND PART OWHATUA SOUTH 7C BLOCK

LAND DISTRICT SOUTH AUCKLAND

